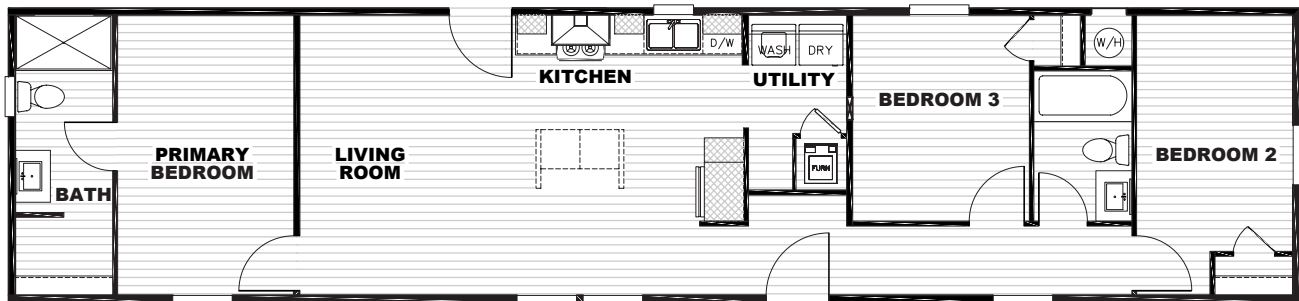


# Tempo



## Rhythm Nation

51TEM16663AH22 | 959 SQ FT | 3 Bedrooms | 2 Baths



- Full Drywall Throughout
- DuraCraft® Cabinets
- Frigidaire® Stainless Steel Appliance Package
- Craftsman Style Front Door
- Ecobee® Smart Thermostat
- Carrier® Furnace



The home series and floor plans indicated will vary by retailer and state. Your local Home Center can quote you on specific prices and terms of purchase for specific homes. Clayton West invests in continuous product and process improvement. All home series, floor plans, specifications, dimension, features, materials, availability, and starting prices shown on this website are artist's renderings or estimates, and are subject to change without notice. Dimensions are nominal and length and width measurements are from exterior wall to exterior wall.



# Tempo Specs

- 8' Flat Ceilings
- Tape & Texture Throughout
- 2x4" Exterior Walls
- DuraCraft® Cabinets (Feat. 42" Overheads)
- LED Recessed Can Lights Throughout
- Ceiling Fan Prep in Living Room and All Bedrooms
- Fiberglass Tubs and Showers
- Frigidaire® Stainless Steel Appliance Package (Feat. 18' Top Freezer)
- Pfister® Faucets Throughout (Feat. Brushed Nickel Pull Down In Kitchen)
- 36" Stainless Steel European Range Hood
- Congoleum® Lux Linoleum
- Kwikset® Door Hardware Throughout (Feat. Thumbatch Front Door)
- Craftsman Style Front Door, 9 Lite Rear Door
- Standard Shingles – One Color
- Awning Ready Option for Communities
- Energy Star® Ready\* (R-22 floor, R-11 wall, R-33 roof)  
\*N/A all regions
- WUI (CA Wildfire) Option
- Garbage Disposal Option
- ecobee® Smart Thermostat
- Carrier® Furnace



The home series and floor plans indicated will vary by retailer and state. Your local Home Center can quote you on specific prices and terms of purchase for specific homes. Clayton West invests in continuous product and process improvement. All home series, floor plans, specifications, dimension, features, materials, availability, and starting prices shown on this website are artist's renderings or estimates, and are subject to change without notice. Dimensions are nominal and length and width measurements are from exterior wall to exterior wall.

